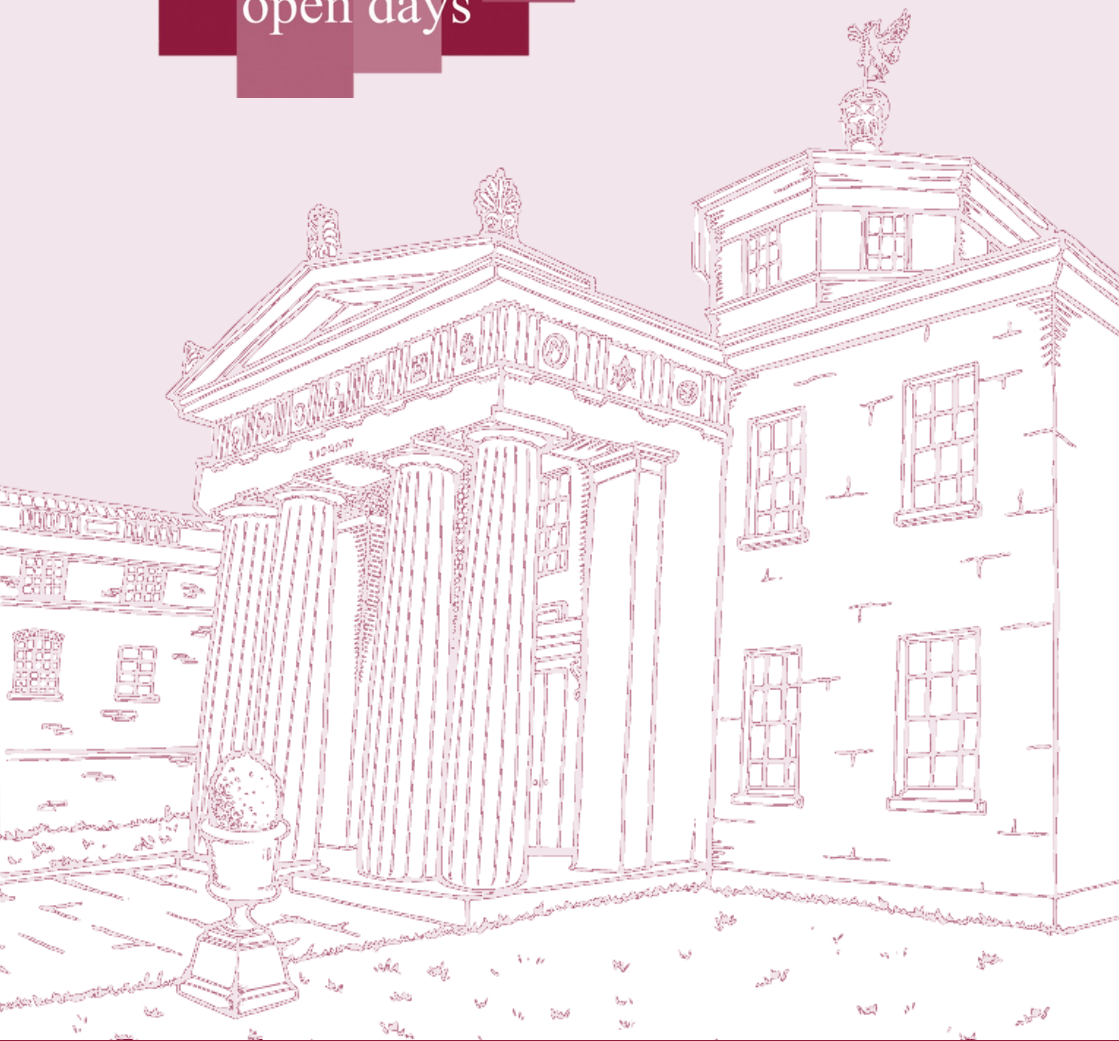


cambridge  
open days



UNIVERSITY OF  
CAMBRIDGE

Postgraduate Open Day Programme  
1 November 2019



# Contents

Thank you for booking onto the 2019 Postgraduate Open Day. This guide will give you all the information you need to plan your visit, but if you have any questions in advance then email the team at [CAOEvents@admin.cam.ac.uk](mailto:CAOEvents@admin.cam.ac.uk). During the day our staff and student ambassadors will be happy to help – we should be easy to spot in our burgundy t-shirts and hoodies.

General Information and Programme Overview	2-7
Travelling to Cambridge	8
Getting around Cambridge	9
Useful Information	10
Your Timetable/Notes	11



# General Information

## Morning Programme: Welcome talks and College tours, 9am—12pm

As a postgraduate student at Cambridge, as well as being a member of the University and your Department or Faculty, you're also a member of one of our 31 Colleges. During the Open Day, Colleges\* will be open for you to visit and to look around.

If you'd like more information about the Colleges please also look at the Open Day app or the Guide to the Cambridge Colleges available on our website. To download the app, just search 'Cambridge Postgraduate Open Day' in the Google Play Store or Apple App Store.

Time	Session	Location
9.15am—9.45am 10.15am—10.45am	Welcome to Cambridge: Colleges and Student Life	Various locations—pre-book only**
9am—9.30am 10am—10.30am 11am—11.30am	College tours	Some Colleges Various locations—pre-book only**
9am—12.00pm	Colleges open for drop-in visits	Various Colleges—no pre-booking required

*\*Please note that King's College are not offering any formal activities during the Postgraduate Open Day.*

*\*\*These sessions are running at various locations . You are able to pre-book the Welcome to Cambridge talk and/or College tours on the booking form. Please check your ticket to see what you are booked on to.*

# General Information

## Afternoon Programme: Departments and Faculties, 2pm—5pm

During the afternoon you will have plenty of opportunities to hear from and talk to staff and students from departments and faculties. You'll find an overview of department activity below, but please also look at the department activity programmes on our website to help you plan your day.

## Exhibition Hub, 11.30am—2.30pm

As well as activities taking place in some departments and faculties, course representatives will be available at our Exhibition Hub from 11.30am—2.30pm to answer questions and provide you with further information. There will also be the opportunity to speak to staff from Graduate Admissions, student services, and the funding bodies. There will be two locations for the Exhibition Hub: the Student Services Centre and the Faculty of Law on the Sidgwick Site. On our app, you'll find the Exhibition Hub stall list so please look to see where your department of interest will be on the day.

## Afternoon Programme Overview

Time	Session	Location
11.30am—2.30pm	Exhibition Hub	Student Services Centre & Faculty of Law—check app and timetables for subject stand locations.
12.00pm—5.15pm	General talks	*See talks timetable on pages 5 and 6.
2pm—5pm	Department specific sessions	Various—these sessions will primarily be in departments and faculties. Please check the detailed department timetables for more information about what's happening in each department.

# Talks

## **Welcome to Cambridge: Colleges and Student Life**

An introduction to the University and its 31 Colleges. This session covers the role of Colleges for postgraduate students at Cambridge, as well as providing an insight into studying, socialising and living in Cambridge.

## **Applying: Writing a Research Proposal**

An overview of the application process for postgraduate courses at Cambridge and guidance on preparing and producing a research proposal. There will be two versions of this presentation, one focussing on applications to courses in the Arts and Humanities, and another focussing on the Sciences.

## **Applying: Master's Courses at Cambridge**

An overview of the application process for postgraduate master courses at Cambridge. There will be two versions of this presentation, one focussing on applications to courses in the Arts and Humanities, and another focussing on the Sciences.

## **Funding Opportunities at Cambridge**

An outline of the funding opportunities available to help postgraduate students finance their studies at Cambridge. This session also includes a Q&A with current students who will share their experiences in applying for and receiving funding from the Cambridge Graduate Funding Competition.

## **Student Support**

An overview of the range of support available to postgraduate students at Cambridge, including information about student services.

# Talks timetable

Session	Time	Location
Applying: Writing a Research Proposal (Arts and Humanities)	12pm—12.45pm	LG18, Faculty of Law, Sidgwick site
	3.30pm—4.15pm	LG18, Faculty of Law, Sidgwick site
Applying: Writing a Research Proposal (Sciences)	12pm—12.45pm	Hopkinson Lecture Theatre, New Museums site
	3.30pm—4.15pm	Lecture Theatre A, Student Services Centre, New Museums site
	3.30pm—4.15pm	Lecture Theatre 2, Department of Chemical Engineering & Biotechnology, West Cambridge site
Applying: Master's Courses at Cambridge (Arts and Humanities)	12pm—12.45pm	Room 6, Lecture Theatre Block, Sidgwick site
	3.30pm—4.15pm	Lady Mitchell Hall, Sidgwick site
Applying: Master's Courses at Cambridge (Sciences)	12pm—12.45pm	Biffen Lecture Theatre, Downing site
	3.30pm—4.15pm	Cockcroft Lecture Theatre, New Museums site

# Talks timetable

Session	Time	Location
Funding Opportunities at Cambridge	1pm—1.45pm	Lecture Theatre A, Student Services Centre, New Museums site
	4.30pm –5.15pm	Lecture Theatre A, Student Services Centre, New Museums site
Student Support	12.15pm—12.45pm	McCrum Lecture Theatre, Corpus Christi College, Bene't Lane, CB2 3QN (alongside the Eagle public house)
	3.45pm—4.15pm	Babbage Lecture Theatre, New Museums site



# Other University facilities

## Cambridge University Library

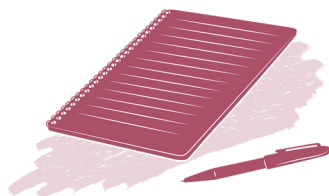
The library is open for drop-in tours for prospective students between 10am—4pm. Tours take around 15-20 minutes.

## Careers Service

The University's Careers Service is based in the Student Services Centre and the Careers Library is open to prospective applicants between 10am—4pm.

## University Sports Centre

The University of Cambridge Sports Centre is based at the West Cambridge site and will be open for drop-in tours from 10am—4pm.



# Travelling to Cambridge

## By Car

We advise that visitors arriving by car use the Park and Ride services ([www.cambridgeshire.gov.uk/parkandride](http://www.cambridgeshire.gov.uk/parkandride)).

Visitors from the north can also use the Guided Busway P&R - follow the signs for Longstanton P&R from junction 29 of the A14 ([www.thebusway.info](http://www.thebusway.info)).

## By Train

Cambridge central train station (CBG) is on the edge of the city centre. The Universal bus service runs via the train station (buses depart approximately every 20 minutes) to the Sidgwick and West Cambridge sites. Catch a Universal bus (towards Madingley Road) from stop 8. Alight on West Road for the Sidgwick site, or JJ Thomson Avenue for the West Cambridge site.

For city centre venues and Colleges, take the Universal bus to Trumpington Street or take one of the Citi services (1, 3 or 7) to St Andrew's Street.

To return to the central train station (CBG), catch a Universal bus (towards Addenbrooke's Hospital/the Biomedical Campus) from JJ Thomson Avenue, West Road, Silver Street, or Trumpington Street. Stagecoach Citi bus services to the station leave from Emmanuel Street (stops E1 and E2).

Cambridge North train station (CMB) is located on the northern edge of the city. For city centre venues, take the Stagecoach Citi 2 and alight at St Andrew's Street. Return buses can be taken from the same stop.

## By Bus

National bus services stop on Parkside, Parker's Piece.



# Getting around Cambridge

The University's departments and faculties, and the Colleges, are situated across Cambridge, though most are within walking distance of the city centre.

As Cambridge is fairly compact and better suited to pedestrians and cyclists than vehicles, wherever practical and possible, we recommend getting around the city on foot or by bike - these are often the quickest means of transport and are also best for getting a sense of the city.

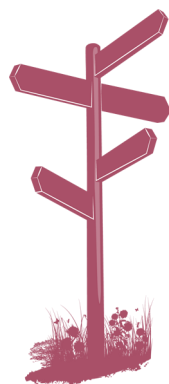
The Universal bus service, subsidised by the University of Cambridge and run by Whippet Coaches, runs frequently between Eddington, West Cambridge, Cambridge city centre, the railway station and Cambridge Biomedical Campus (for Addenbrooke's Hospital). Users of Maddingley Road Park and Ride can access the nearest Universal bus stop on Eddington Avenue using a footpath to the east side of Maddingley Park and Ride.

For more information about local bus services see

[www.cambridgeshire.gov.uk/buses](http://www.cambridgeshire.gov.uk/buses)

[www.environment.admin.cam.ac.uk/travel/catch-bus](http://www.environment.admin.cam.ac.uk/travel/catch-bus)

[Maps](#) and [timetables](#) can also be found online and on our app.



# Useful information

## Refreshments

Refreshments can be purchased on many of the University's sites and there are plenty of cafés and eateries in the city centre itself.

On the Sidgwick site, the Sidgwick Buttery is open 8.30am—5.30pm and the Arc Café is open 8.30am—5pm.

At the New Museums site, the Whale Café is open 8am—4pm.

## Prayer Room

On the Sidgwick site, the prayer room is located behind the Lecture Block and is available 10am—4pm. In the city centre, there is a prayer room available at Emmanuel College from 10am—4pm. Please enter through the main College entrance and follow the signs.

## In case of an emergency

In case of emergency, please contact the nearest member of University staff. In the event of a fire alarm, please vacate the building immediately and follow staff directions. Do not use lifts and remain outside until you're informed by a member of staff that you may re-enter.

## Photography

Please note that we are photographing the event for publicity purposes. If you do not wish to be in any of the photographs, please notify a member of staff at one of the Colleges or at the Student Services Centre.



# Your timetable/Notes

Session	Time	Location
.....	.....	.....
.....	.....	.....
.....	.....	.....
.....	.....	.....
.....	.....	.....
.....	.....	.....
.....	.....	.....
.....	.....	.....
.....	.....	.....
.....	.....	.....
.....	.....	.....
.....	.....	.....
.....	.....	.....
.....	.....	.....
.....	.....	.....

## Session

## Time

## Location

[illegible]





## **Cambridge Admissions Office**

01223 765514

[CAOEvents@admin.cam.ac.uk](mailto:CAOEvents@admin.cam.ac.uk)

[www.graduate.study.cam.ac.uk](http://www.graduate.study.cam.ac.uk)



**UNIVERSITY OF  
CAMBRIDGE**

Details are correct at the time of printing (October 2019) but should be checked against the Graduate Admissions website for the most up-to-date information.

© University of Cambridge 2019